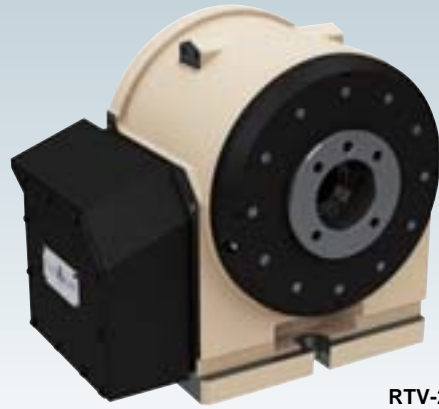


DD Table

RTV·RTT

RTV-202· ϕ 500 Table RTT-107

DD (Direct Drive) motors realize high speed, high acceleration and backlash-free operation. Most suitable for high speed and high quality machining for various impellers, blades and medical equipments, and for high speed indexing operation for automotive parts. To provide optimum ideas and products based upon versatile applications as well as their sales record.



RTV-202

Specifications

Unit : mm

	RTV-202	ϕ 500 Table	RTT-107	
Controll axis	1-axis	1-axis	2-axis	
	Vertical setting only	Horizontal setting only	Rotary axis	Tilt axis
Table diameter (Spindle diameter) mm	ϕ 120	ϕ 537	ϕ 120	—
Servo motors (for FUNAC)	Dis260/300	—	α Dis110/300	α Dis260/300
Type of scale	α CZI512S	RCN226	MPRZ-736B	MPRZ-736B
Table max. rpm	min ⁻¹ 150	60	150	150
Clamp torque	N·m 300 (Pneumatic pressure 0.49MPa)	3,800 (Hydraulic pressure 0.49MPa)	—	90 (Pneumatic pressure 0.49MPa)
Center height	mm 190	—	—	300
Rotary joint	—	9P+1P	—	—
Allowable work weight	kg 50	700	30	
Net weight	kg 90	485	250	

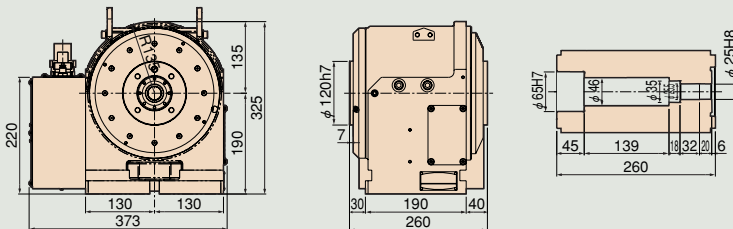
*Contact us for the following models. Vertical type DD Table ϕ 100~ ϕ 500 Horizontal type DD Table ϕ 300~ ϕ 630
Tilting type DD Table ϕ 100~ ϕ 630

*Applicable for various kind of DD motors which depend upon the type of controllers. Contact us for details.

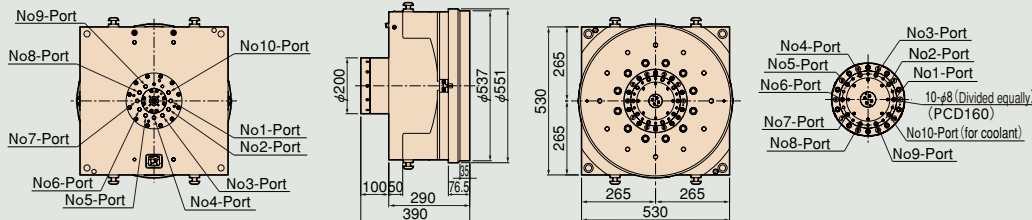
Dimensions

Unit : mm

RTV-202

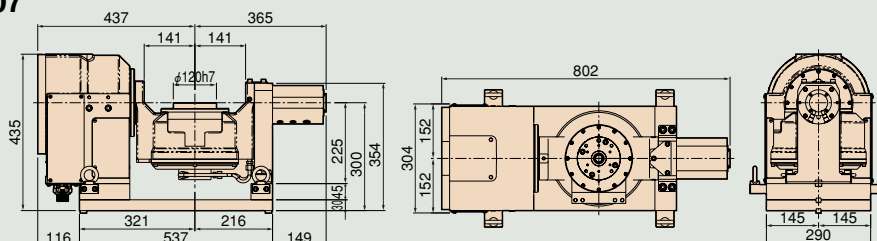


ϕ 500DD Table



ϕ 500 DD Table

RTT-107



RTT-107