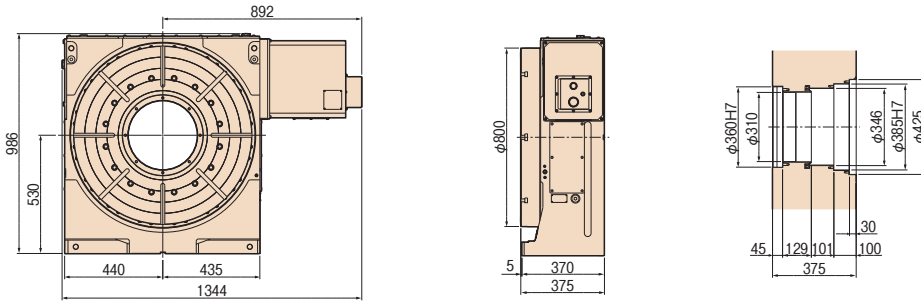


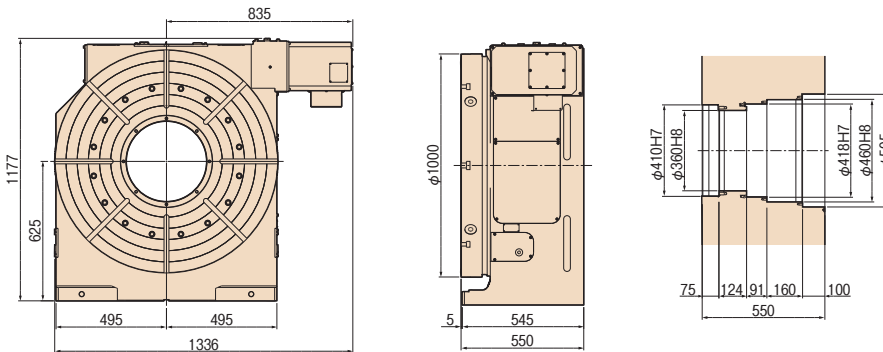
Dimensions

Unit: mm

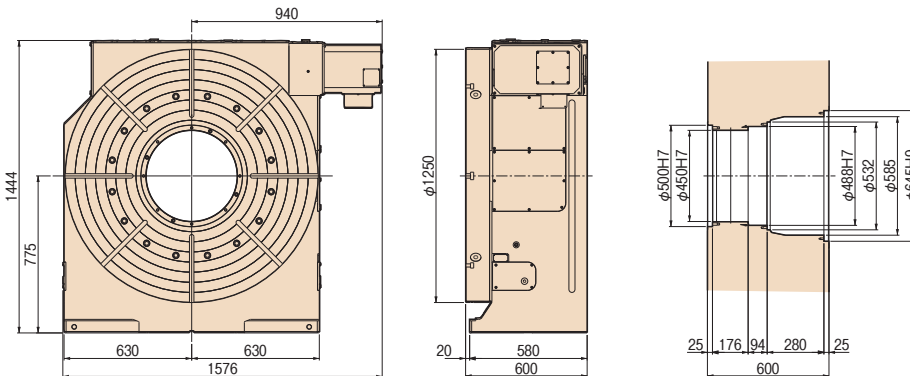
RCV-800R



RCV-1000R

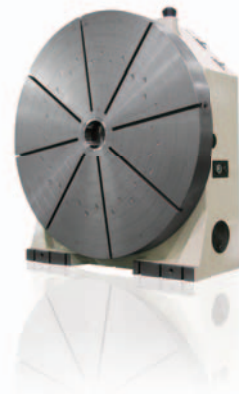


RCV-1250R



RTV-902

Largest Vertical NC Rotary Table
 Table diameter : ϕ 2,000 mm
 Allowable work weight : 30 t
 (with support spindle)
 Indexing accuracy : 15 sec
 Available up to ϕ 3,000 mm



- RBS
- TBS
- RWE/RWA
RN
- RWE/RWA-B
RNCV-B
- RNCM
- RWB
- RWB-K
RNCK
- RCH
RNC
- RCV
RNCV**
- Multi-Spindle
RN-N
- TWA/TN
- TTNC
- THNC
- Multi-Spindle
TTNC-N
- RDS
- RTV
RTT
- RCB
- NC Controllers
- Accessories
- Options
- Technical Information

Note: The above dimensions are for FANUC servo motors. The dimensions of servo motors of other manufacturers may be larger.

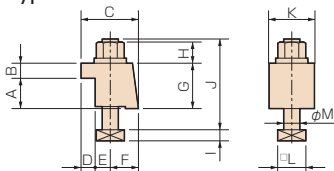
Clamping block and bolt

Unit: mm

	Type	Q'ty	T-slot pitch	T-slot width	A	B	C	D	E	F	G	H	I	J	K	L	M
RCV-800	II	4	100~250	22	60	28	95	29	16	50	88	27	13	145	100	32	20
RCV-1000	II	4	80~320	22	60	28	95	29	16	50	88	27	13	145	100	32	20
RCV-1250	II	8	80~450	22	60	28	95	29	16	50	88	27	13	145	100	32	20
RNCV-1501	IV	8	150~600	28	70	35	95	29	16	50	112	15	17.5	160	100	41.3	24

Note: When using a machine with a T-slot pitch other than the above, use suitable clamping blocks and bolts that are available on the market, or order custom-made ones from TSUDAKOMA. (Option)

Type II



Type IV

