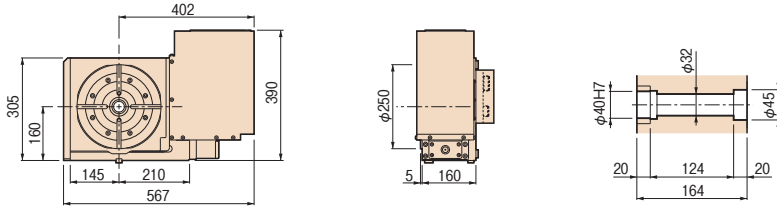


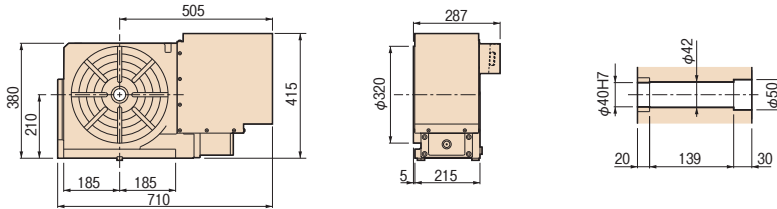
Dimensions

Unit: mm

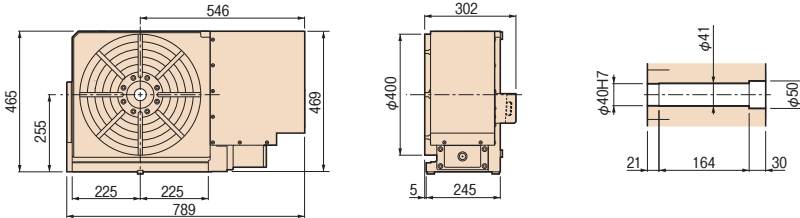
RNCM-251R



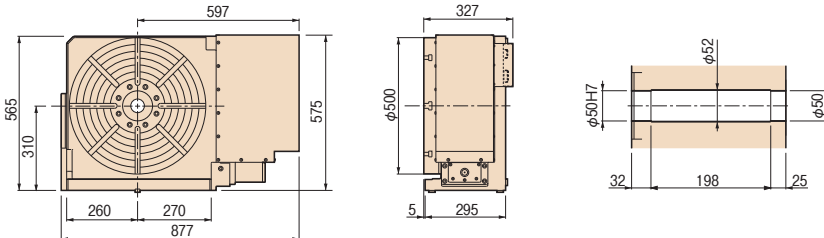
RNCM-301R



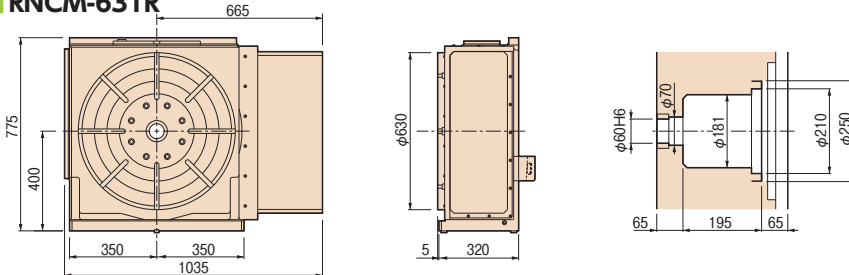
RNCM-401R



RNCM-501R



RNCM-631R



Note: The above dimensions are for FANUC servo motors. The dimensions of servo motors of other manufacturers may be larger.

Clamping block and bolt

Unit: mm

	Type	Q'ty	T-slot pitch	T-slot width	A	B	C	D	E	F	G	H	I	J	K	L	M
RNCM-251	I	4	50~125	18	25	12	80	12	33	35	22	21	11	65	40	28	16
RNCM-301	I	4	55~127	18	30	15	90	16	31	43	25	21	11	70	46	28	16
RNCM-401	I	4	55~155	18	30	15	90	16	31	43	25	21	11	70	46	28	16
RNCM-501	I	4	60~194	18	40	20	110	18	42	50	25	21	11	70	46	28	16
RNCM-631	II	4	90~255	18	40	18	63	18	15	30	58	21	11	105	60	28	16

Note: When using a machine with a T-slot pitch other than the above, use suitable clamping blocks and bolts that are available on the market, or order custom-made ones from TSUDAKOMA. (Option)

With Hydraulic Power Chuck

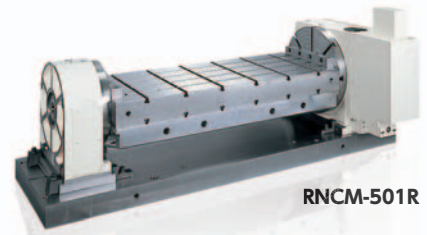
P.56



RNCM-301R

With Support Spindle and Fixture Plate

P.59



RNCM-501R

RBS

TBS

RWE/RWA
RN

RWE/RWA-B
RNCV-B

RNCM

RWB

RWB-K
RNCK

RCH

RNC

RCV
RNCV

Multi-Spindle

RN-N

TWA/TN

TTNC

THNC

Multi-Spindle

TTNC-N

RDS

RTV
RTT

RCB

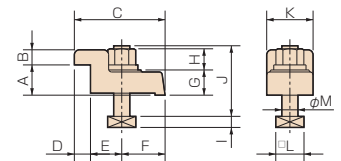
NC Controllers

Accessories

Options

Technical
Information

Type I



Type II

