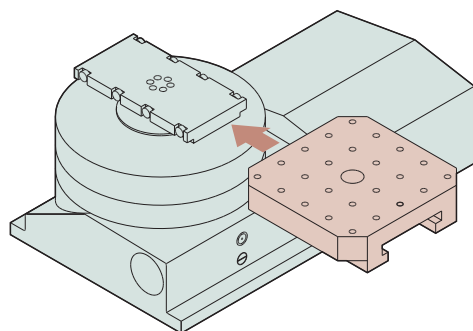


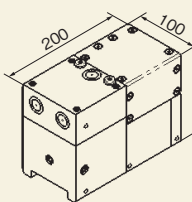
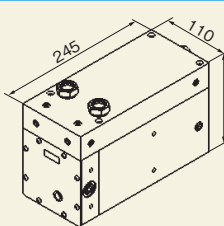
Pallet Clamp

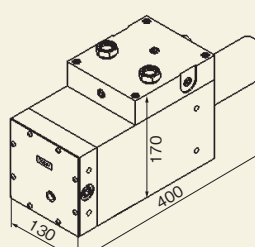
An NC rotary table with a built-in pallet clamp is available. This type of rotary table enables fast and highly accurate positioning of workpieces at any angle. Attachment of an auto-coupler makes it possible to apply hydraulic or pneumatic pressure to the top surface of pallets. By combining with a pallet-changer, setup, transfer and exchange can be carried out automatically.



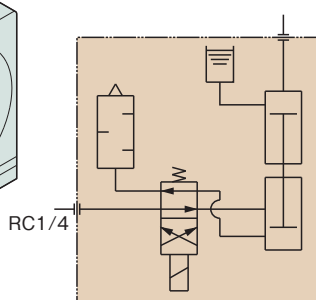
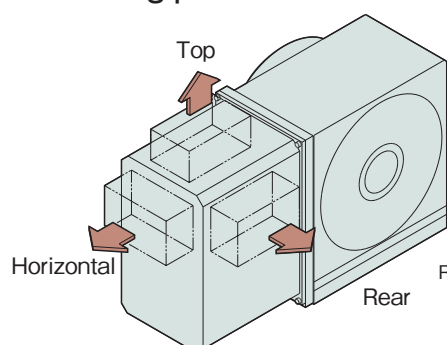
Air-hydraulic Booster

Air-hydraulic boosters are available for machines without a hydraulic source, which convert pneumatic pressure into hydraulic pressure for clamping.

Type	Applicable model	Dimensions
TB-80	RWB-250	
	RWB-250 + SSB-160	
	RWB-320	
	RWB-400	
	RCB-350	
	RCB-450	
TB-100	TWB-320	
	RWB-320 + SSB-210	
	RWB-400 + SSB-255	
	RWB-500	
	RWB-500 + SSB-310	
	RWB-630	
	RWB-630 + SSB-310	
	RCB-550	
	TWB-630	

Type	Applicable model	Dimensions
TB-115	RCH/RCV-800	
	RCH/RCV-1000	
	RCH/RCV-1250	

Mounting position



Please specify the following items:

1. Mounting position of the Air-hydraulic booster
2. Control voltage for the solenoid of the Air-hydraulic unit: 100VAC or 24VDC (This voltage depends on the machine to be attached)

RBS

RBH

Multi-Spindle
RBM

TBS

RWE/RWA
RN

RWH

RWA-B
RNCV-B

RWB

RWB-K
RNCK

RCB

RCH
RNC

RCV

Multi-Spindle
RWM

TWA/TN

TWB
TTNC

Multi-Spindle
TWM

RDS

RTV
RTT

TDS
TDB

NC Controllers

Accessories

Options

Technical
Information