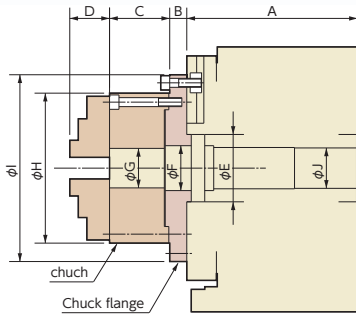
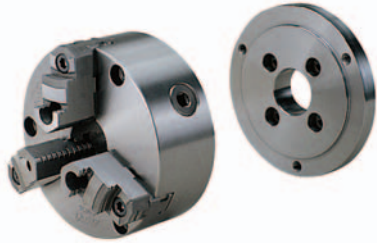


Chuck

Scroll Chuck



Chuck size (inch)	Chuck type	Outer chucking range (mm)	Inner chucking range (mm)
4	TC110F	2 to 89(108)	36 to 78(97)
5	TC130F	3 to 104(134)	42 to 92(122)
6	TC165F	3 to 135(170)	52 to 119(152)
7	TC190F	3 to 153(206)	56 to 134(188)
9	TC230F	4 to 190(242)	64 to 169(222)
10	TC273F	10 to 229(277)	72 to 208(256)
12	TC310F	10 to 258(322)	82 to 238(302)
15	TC385F	20 to 329(394)	100 to 302(367)
18	TC460F	40 to 367(478)	150 to 379(490)

Note 1: The above dimensions are shown with hardened jaws. Soft jaws are optional.
 Note 2: It is possible to chuck up to chucking range (), but is not recommended.

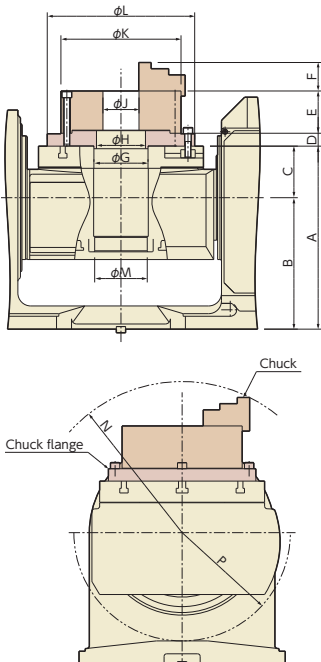
Unit: mm

	Chuck size (inch)	A	B	C	D	E	F	G	H	I	J		
RBS/RBH-160	4	170	18	58	31.3	55	45	24	112	112	40		
	5			60	37.3			32	132	132			
	6			66	44.3			44	167	167			
	7			75	46.3			54	192	192			
RBS/RBH-250	5	180	18	60	37.3	80	65	32	132	132	50		
	6			66	44.3			44	167	167			
	7			75	46.3			54	192	192			
	9			82	55.3			70	233	233			
RBS/RBH-320	6	225	18	66	44.3	115	100	44	167	167	85		
	7			75	46.3			54	192	192			
	9			82	55.3			70	233	233			
	12			92	59.3			110	310	310			
RN-100	4	145	10	58	31.3	50	50	24	112	112	30		
	5			60	37.3			32	132	132			
RWE/RWA/RWH-160	4	155	18	58	31.3	55	45	24	112	112	40		
	5			60	37.3			32	132	132			
	6			66	44.3			44	167	167			
	7			75	46.3			54	192	192			
RWE/RWA/RWH-200	5	165	18	60	37.3	65	55	32	132	132	45		
	6			66	44.3			44	167	167			
	7			75	46.3			54	192	192			
	9			82	55.3			70	233	233			
RWA/RWH-250	5	165	18	60	37.3	80	65	32	132	132	50		
	6			66	44.3			44	167	167			
	7			75	46.3			54	192	192			
	9			82	55.3			70	233	233			
RWA/RWH-320	6	210	18	66	44.3	115	100	44	167	167	85		
	7			75	46.3			54	192	192			
	9			82	55.3			70	233	233			
	10			86	53.3			100	274	274			
RWB-250	6	180	18	66	44.3	105	65	44	167	208	80		
	7			75	46.3			54	192	236			
	9			82	55.3			70	233	233			
	12			92	59.3			110	310	310			
RWB-320	6	240	18	66	44.3	150	101	44	167	216	120		
	7			75	46.3			54	192	246			
	9			82	55.3			70	233	286			
	10			86	53.3			100	274	318			
RWB-400	7	275	20	75	46.3	200	151	54	192	286	160		
	9			82	55.3			70	233	286			
	10			86	53.3			100	274	336			
	12			92	59.3			110	310	370			
RWB-500	15	325	30	100	70.3	220	170	150	385	385	182		
	9			25	82			55.3	70	233		356	
	12			25	92			59.3	210	110		310	386
	15			30	100			70.3	210	150		385	460
	18		35	114	79.8		210	180	460	500			

Note 1: The above dimensions refer to power chucks by KOBAYASHI IRON WORKS CO., LTD.
 Note 2: The flange type and the method of attaching the flange fixing bolt differ depending on the rotary table and the chuck size.

- RBS
- RBH
- RBM
- TBS
- RWE/RWA/RN
- RWH
- RWA-B
- RWB
- RWB-K
- RCB
- RCH
- RCV
- Multi-Spindle RWM
- TWA/TN
- TWS
- TWB
- Multi-Spindle TWM
- RDS
- TDS
- TDB
- NC Controllers

- Accessories
- Options
- Technical Information



型式	Chuck size (inch)	A	B	C	D	E	F	G	H	J	K	L	M	N	P						
TBS-130	5	225	160	65	18	60	37.3	55	45	32	132	132	40	R198	R127						
	4													58	31.3	24	112	112	R191		
	5													60	37.3	32	132	132	R204	R145	
	6													66	44.3	44	167	167	R223		
TBS-160	7	270	200	70	18	75	46.3	55	45	54	192	192	40	R241							
	4													58	31.3	24	112	112	R164	R106	
	5													60	37.3	32	132	132	R177		
	6													66	44.3	44	167	167	R226		
TWA-100	7	180	135	45	15	60	37.3	55	45	32	132	132	35	R193	R114						
	4													58	31.3	24	112	112	R176		
	5													60	37.3	32	132	132	R189	R135	
	6													66	44.3	44	167	167	R208		
TWA-160	7	235	180	55	18	75	46.3	55	45	54	192	192	40	R226							
	4													60	37.3	32	132	132	R200	R148	
	5													66	44.3	44	167	167	R219		
	6													75	46.3	54	192	192	R236		
TWA-200	7	270	210	60	18	82	55.3	65	55	70	233	233	45	R258							
	9													25	82	55.3	70	233	233	R258	
	10													82	55.3	70	233	316	R213		
	12													86	53.3	100	274	336	R222	R375	
TN-450	15	425	425	0	25	92	59.3	170	150	110	310	370	136	R244							
	9													30	100	70.3	150	385	445	R288	
	10													86	53.3	100	274	336	R222		
	12													92	59.3	110	310	370	R244		

Note 1: The above dimensions refer to power chucks by KOBAYASHI IRON WORKS CO., LTD.
 Note 2: The flange type and the method of attaching the flange fixing bolt differ depending on the rotary table and the chuck size.