

Support Spindle

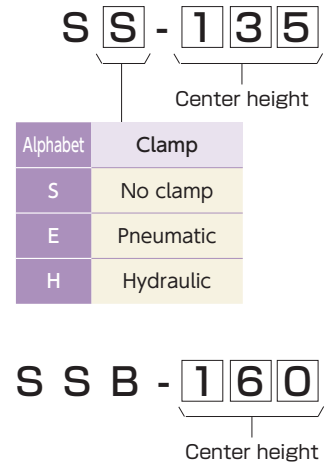
User friendly renewal allows mounting of compact rotary joint and the top surface design of the spindle is the same as the basic models RWA/RWE/RWA-160.

☞ Rotary joint **P.68**

Compatible Rotary Tables

Support spindle type	NC Rotary Table			
	No clamp	Pneumatic clamp	Hydraulic clamp	Strong hydraulic clamp
RWE/RWA/RWH-160	SS-135	SE-135	SH-135	—
RBS/RBH-160 RWE/RWA/RWH-200 RWA/RWH-250 RWB-250	SS-160	SE-160	SH-160	SSB-160
RBS/RBH-250 RWA/RWH-320 RWB-320	SS-210	SE-210	SH-210	SSB-210
RWB-400	—	—	—	SSB-255
RWB-500	—	—	—	SSB-310

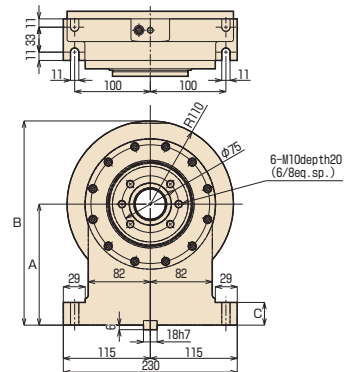
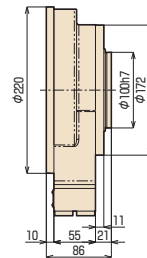
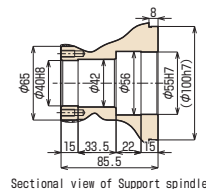
Order Code



SS-□□□ (No clamp)



SS-160



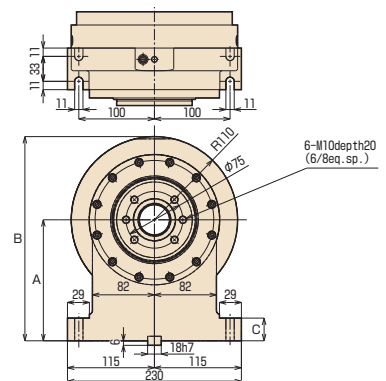
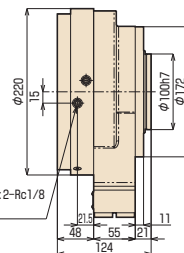
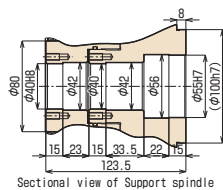
Unit: mm

Order Code	A	B	C	Weight kg
SS-135	135	245	25	19
SS-160	160	270	30	21
SS-210	210	320	30	24

SE-□□□ (Pneumatic clamp)



SE-160



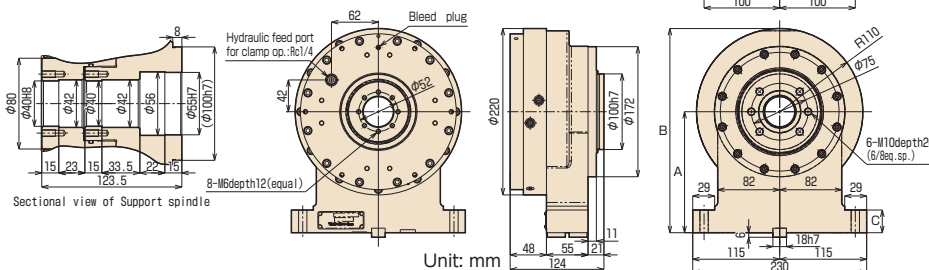
Unit: mm

Order Code	A	B	C	Clamping Torque (N·m) (0.49MPa)	Weight kg
SE-135	135	245	25	400	28
SE-160	160	270	30		30
SE-210	210	320	30		33

SH-□□□ (Hydraulic clamp)



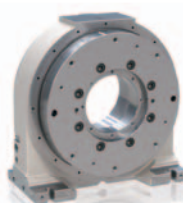
SH-160



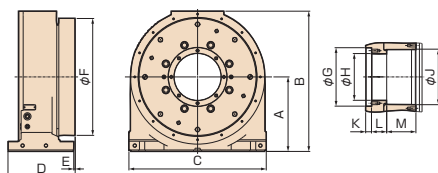
Unit: mm

Order Code	A	B	C	Clamping Torque (N·m) (3.5MPa)	Weight kg
SH-135	135	245	25	800	28
SH-160	160	270	30		30
SH-210	210	320	30		33

SSB-□□□



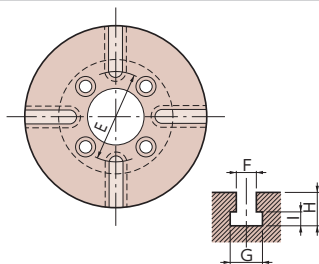
SSB-255



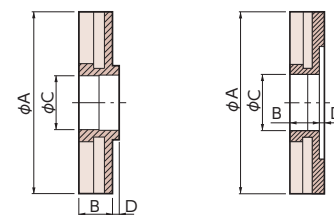
Unit: mm

Order Code	A	B	C	D	E	F	G	H	J	K	L	M	Clamping Torque (N·m)		Weight kg
													3.5MPa	4.9MPa	
SSB-160	160	303	290	175	5	250	105H7	80H7	95H8	15	42	66	1,300	2,000	60
SSB-210	210	396	380	210	5	320	150H7	120H7	145H8	15	50	90	3,100	4,700	120
SSB-255	255	480	470	230	5	400	200H7	160H7	190H8	20	52	100	5,500	8,000	185
SSB-310	310	560	470	230	5	500	200H7	160H7	190H8	20	52	100	5,500	8,000	230

Face Plate



Unit: mm



Mount by fitting inner dia. of the spindle.

Mount by fitting outer dia. of the spindle. For RN-100 only

	A Face plate diameter	B	C	D	E	F	G	H	I
RN-100	φ135	25	φ50H7	5	(φ50 through T-slot)	10H8	16 ⁺² ₀	17	7 ⁺¹ ₀
TBS-130 TWA-100/130 TWS-250 TWM-100	φ135	25	φ40H7	5	φ70	12H8	19 ⁺² ₀	19	8 ⁺¹ ₀
RBS/RBH-160 RWA/RWE/RWH-160 RWM-160 TBS-160 TWA-160 TWS-500 TWM-160	φ160 φ200	30	φ50H7	3	φ80	12H8	19 ⁺² ₀	19	8 ⁺¹ ₀
RWA/RWE/RWH-200 RWM-200 TWA-200	φ200 φ250	30	φ60H7	3	φ90	12H8	19 ⁺² ₀	19	8 ⁺¹ ₀
RBS/RBH-250 RWA/RWH-250 RWM-250 TBS-250 TWM-250	φ250	30	φ75H7	5	φ110	12H8	19 ⁺² ₀	19	8 ⁺¹ ₀
RBS/RBH-320 RWA/RWH-320 RWM-320	φ320	40	φ110H7	5	φ180	14H8	23 ⁺² ₀	23	9 ⁺² ₀

Example



* Only face plate for RN-100 is mounted by fitting outer diameter of the spindle.
* TSUDAKOMA recommends the face plate to fit inner diameter of the spindle. TWA-160/TBS-160 also has a face plate for fitting outer diameter of the spindle, so please check the face plate of your existing machine when purchasing a repeat unit.

- RBS
- RBH
- RBM
- TBS
- RWE/RWA
RN
- RWH
- RWA-B
- RWB
- RWB-K
- RCB
- RCH
- RCV
- Multi-Spindle
RWM
- TWA/TN
- TWS
- TWB
- Multi-Spindle
TWM
- RDS
- TDS
TDB
- NC
Controllers
- Accessories
- Options
- Technical
Information