

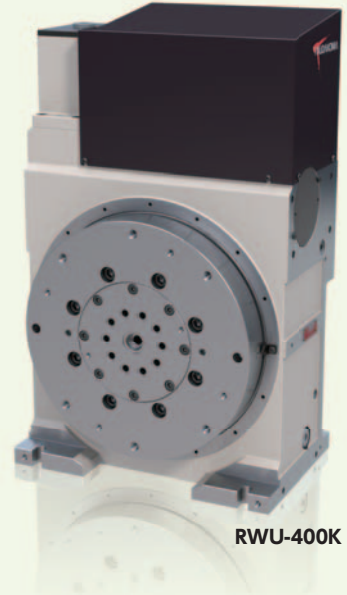
Please feel free to contact us when you need a custom rotary table.

TSUDAKOMA proposes and provides optimal products based on our extensive delivery experience. Please feel free to contact us for specifications not listed in this catalog.

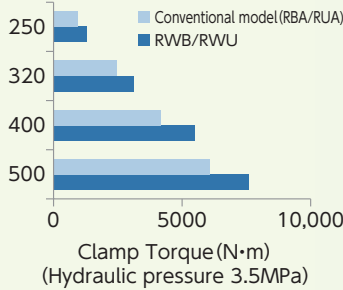
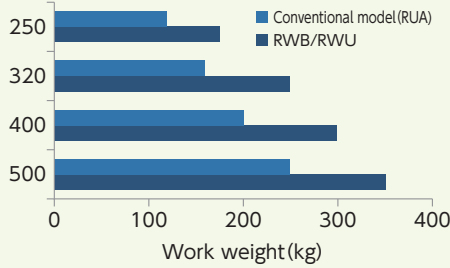
## **RWU** RWU-250•320•400

## **RWU-K** RWU-320K•400K•500K

RWU is designed for vertical setting only and is primarily used as a tilt device. Equipped with an 8- to 16-port rotary joint. Allowable work weight has been improved by approximately 50% and clamping torque has been improved by 30%, compared to conventional models. It provides stable machining even at positions distant from the center of rotation.



RWU-400K

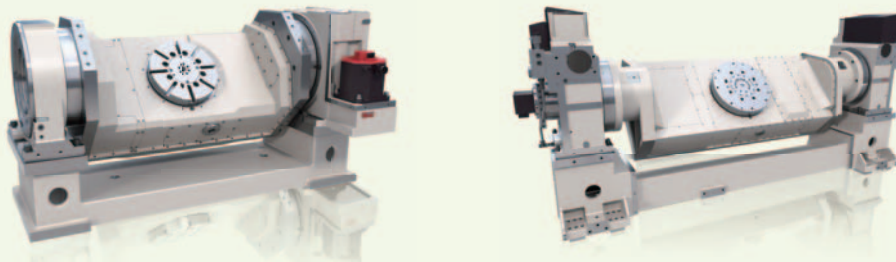


SSB-255

## **SSB** SSB-160•210•255•310

Used as a support for tilt devices. Can be equipped with 8 to 16 port rotary joints. Specification details [P.65](#)

### Application examples



### Combination examples

