

TWS TWS-250•500



This model features an enlarged swing diameter for the rotary axis of the TWA series making it ideal for machining large-diameter and lightweight workpieces. When mounting a large-swing jig or machining large-diameter, lightweight workpieces, a smaller NC rotary table can be used, enabling overall facility downsizing.

Specifications

Unit: mm

		TWS-250	TWS-500
Handedness	R	—	○
	L	—	○
Tilt range		-17° to +107°	-30° to +110°
Spindle diameter		φ90h7	φ100h7
Table diameter		φ135 (Option)	φ160 or φ200 (Option)
Table height at 0° position		210	250
Center height at 90° position		150	190
Center bore	Nose diameter	φ55H7	φ55H7
	Through-bore	φ40	φ40
Table T-slot width		12H8 (w/face plate)	12H8 (w/face plate)
Guide block width		14h7	18h7
Rotary axis swing diameter		φ250	φ500
Servo motors (for FANUC)	Rotary axis	αiS2	Rotary axis αiF4
	Tilt axis	αiS2	Tilt axis αiF4
Inertia converted into motor shaft	× 10 ⁻³ kg·m ²	0.11	0.14
Speed reduction ratio		1/60	1/120
Table max. rpm	min ⁻¹	41.6 (Motor rpm: 2,500min ⁻¹)	16.6 (Motor rpm: 2,000min ⁻¹)
Clamp system		Pneumatic	Pneumatic
		Pneumatic	Pneumatic
Clamp torque	∕ pneumatic pressure 0.49MPa N·m	500	500
Indexing accuracy (the sum)	arcsec	40	—
Tilting accuracy (the sum)	Tilt 0° to 90° arcsec	—	45
	Tilt -30° to 90° arcsec	—	—
Net weight	kg	95	230/280 (With raising base specification(option))
Allowable work weight	0° (Horizontal)	kg	35
	0° to 90° (Tilting)	kg	100
Allowable work moment	W×L	N·m	20
	F	N	70
Allowable load (when table is clamped)	F×L	N·m	24
	F×L	N·m	67
Allowable work inertia	J = $\frac{W \cdot D^2}{8}$	kg·m ²	3,920
			10,800
Allowable load (when table is clamped)	F×L	N·m	200
	F×L	N·m	500
Allowable work inertia	J = $\frac{W \cdot D^2}{8}$	kg·m ²	500
			1,000
Allowable work inertia	J = $\frac{W \cdot D^2}{8}$	kg·m ²	0.08
			0.32

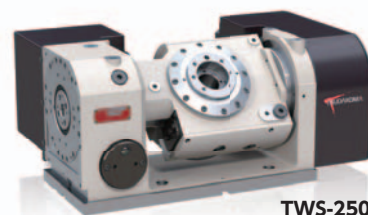
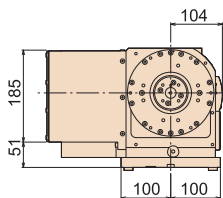
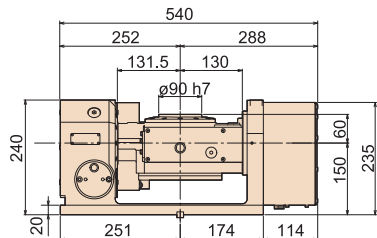
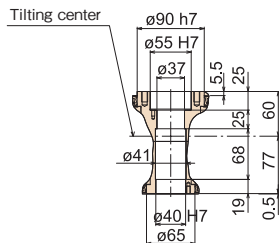
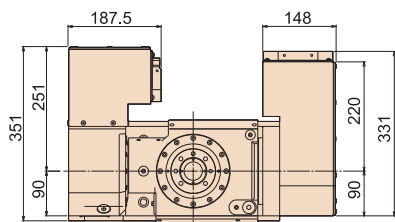
CE correspondence model

- Servo motors of other manufacturers **P.70** When assembling a faceplate or a fixture with the main spindle **P.81**
- Workpiece mounting space for tilting rotary tables Please be sure to check the relationship between workpiece size and swing diameter in advance. **P.72**
- High-precision Spec. **P.66** Pull Stud **P.68** Rotary Joint **P.68**

Dimensions

Unit: mm

TWS-250



TWS-250

RBS

RBH

RBM

TBS

RWE/RWA
RN

RWH

RWA-B

RWB

RWB-K

RCB

RCH

RCV

Multi-Spindle
RWM

TWA/TN

TWS

TWB

Multi-Spindle
TWM

RDS

TDS

TDB

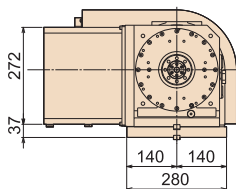
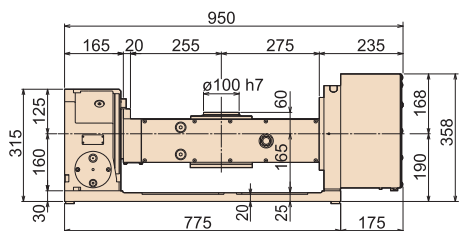
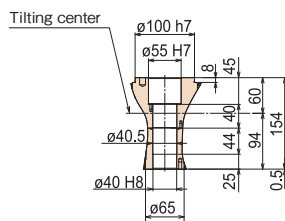
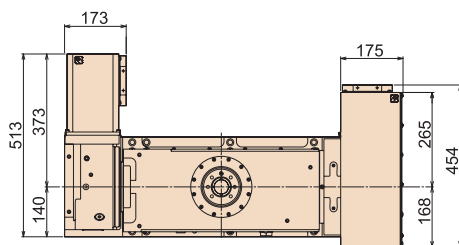
NC Controllers

Accessories

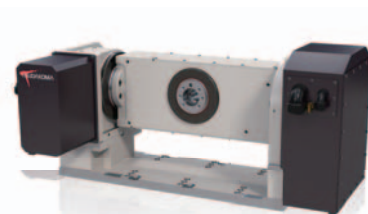
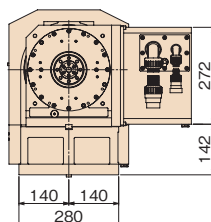
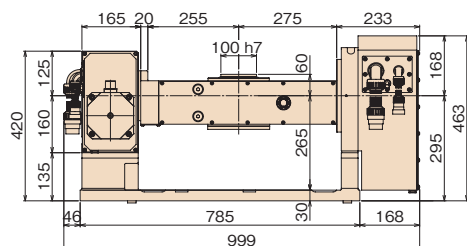
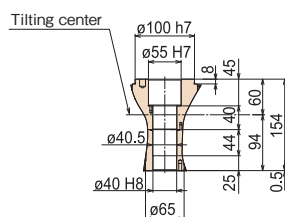
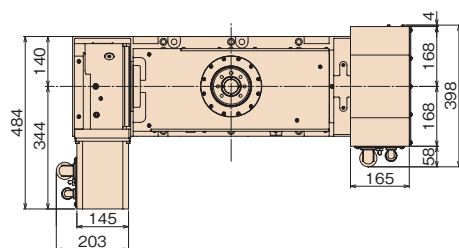
Options

Technical
Information

TWS-500R



TWS-500L,U (option)



Raising base specification **TWS-500L,U**
(Option)
Can swing ϕ 500mm at any angle

For workpieces up to ϕ 500mm

Raising Base	Tilt range
with	-30° to +110°
without	-30° to + 55°

Note: The above dimensions are for FANUC servo motors. The dimensions of servo motors of other manufacturers may be larger.