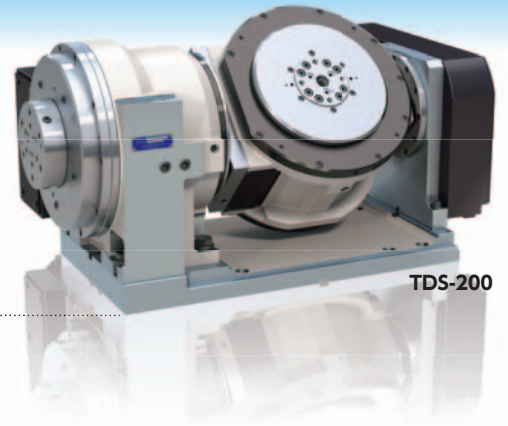


# TDS TDS-200

# TDB TDB-200



TDS-200

Achieves both turning at a maximum of 3,000 min<sup>-1</sup> and milling by positioning in one chucking. Contributes to labor savings, automation, and improved processing efficiency.

## Specifications

Unit: mm

		TDS-200		TDB-200R,F	
Tilt range		-100° to +10°		-100° to +10°	
Table diameter		φ90		φ90	
Table height at 0° position		325		325	
Center height at 90° position		225		225	
Center bore	Nose diameter	φ20		φ20	
	Through-bore	—		—	
Motor type		Rotary axis TSUDA-01	Tilt axis Dis120/600-230-B	Rotary axis TSUDA-01	Tilt axis (BallDrive) αis4
Type of scale		αiCZ512A		αiCZ512A	
Speed reduction ratio		1/1		1/1	1/60
Table max. rpm	min <sup>-1</sup>	3,000	100	3,000	50 (Motor rpm:3,000 min <sup>-1</sup> )
Clamp system		Pneumatic		Pneumatic	
Clamp torque /pneumatic pressure 0.49MPa	N·m	400	500	400	500
Indexing accuracy(the sum)	arcsec	20	—	20	—
Tilting accuracy(the sum) Tilt -100° to +10°	arcsec	—	20	—	40
Net weight		195		180	
Allowable work weight	0° (Horizontal)	50		50	
	0° to 90° (Tilting)	50		50	
Allowable work moment	W×L	—		57	
Accessories	F	2,940		2,940	
Options	Allowable load (when table is clamped)	F×L	400	400	
		F×L	500	500	
Technical Information	Allowable work inertia	$J = \frac{W \cdot D^2}{8}$	0.3	0.3	

### CE correspondence model

Note: Customers are required to prepare oil cooling unit for installation.

Workpiece mounting space for tilting rotary tables **P.72**

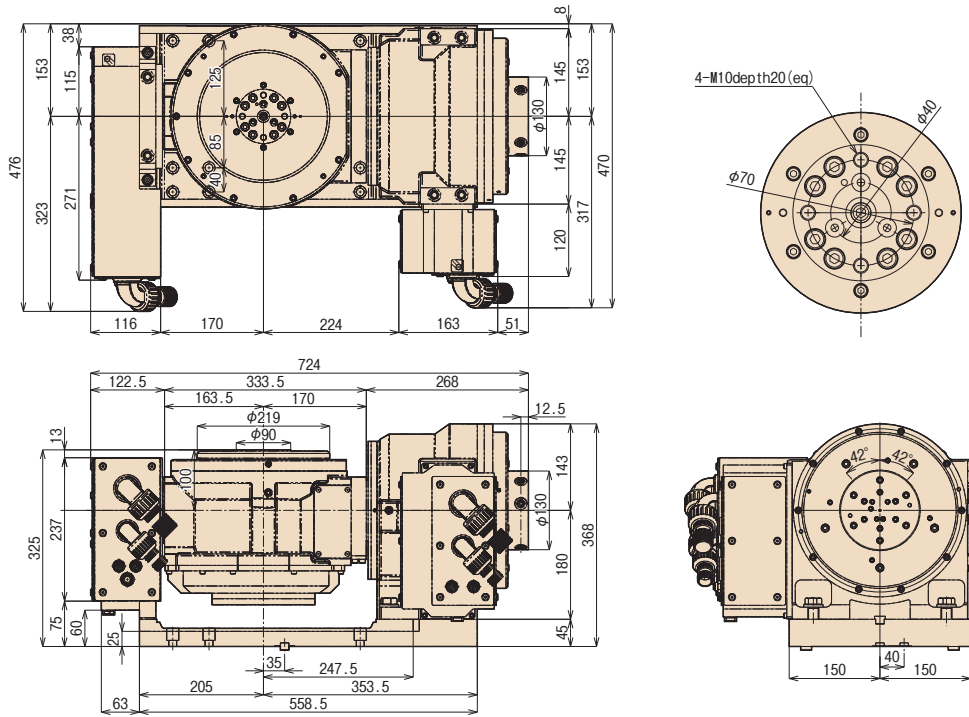


TDB-200R,F

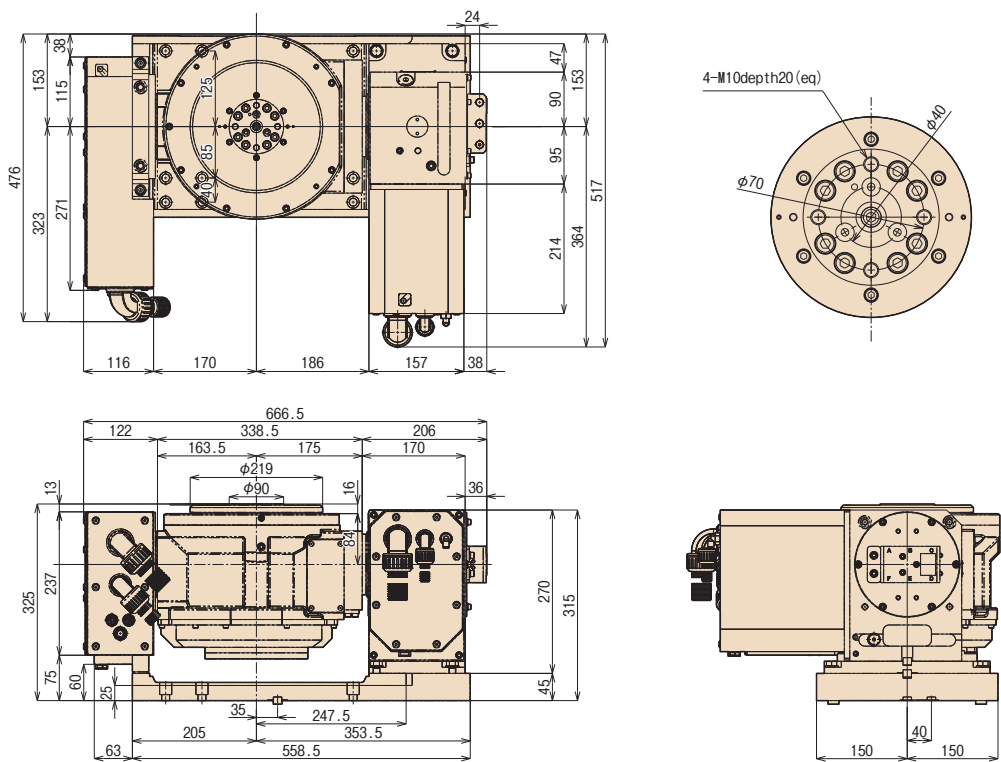
# Dimensions

Unit: mm

## TDS-200



## TDB-200R,F



Note: The above dimensions are for FANUC servo motors. The dimensions of servo motors of other manufacturers may be larger.

- RBS
- RBH
- RBM
- TBS
- RWE/RWA  
RN
- RWH
- RWA-B
- RWB
- RWB-K
- RCB
- RCH
- RCV
- Multi-Spindle  
RWM
- TWA/TN
- TWS
- TWB
- Multi-Spindle  
TWM
- RDS
- TDS**
- TDB**
- NC Controllers
- Accessories
- Options
- Technical Information